

# Bimbadeen Heights Primary School

FACT SHEET February 2013

[www.yarraranges.vic.gov.au](http://www.yarraranges.vic.gov.au)



## The School Pick up and Drop off Zone

Council officers have been working with representatives from Bimbadeen Heights Primary School to improve access to the school Pick Up and Drop Off zone. This continues to be a work in progress.

Bimbadeen Heights Primary School has parking available within a short walking distance and not all of it involves a steep climb. To improve access further, the school have implemented a Pick Up and Drop Off zone close to the school.

Unfortunately, the location of the supervised school crossing and the roundabout mean there is no queue area along Hayrick Lane. This means that if no spaces are available, you have to drive past and continue around the block.

Fortunately the school is ideally located to allow parents to leave the area and come back past the Pick Up and Drop Off zone.

Current parking restrictions apply and must be observed. The signs associated with the Pick Up and Drop Off zone and the approach to the zone are shown on this page. Parking restrictions will be enforced.

On the next page is information about how you can help.

Bimbadeen Heights Primary School is to be commended on its promotion of Active Travel, a program to encourage safe walking and cycling to school.

**Thank you** to those parents and children who walk or cycle to school. It all helps.



You must not park for more than 5 minutes in this area between 8am and 9am or between 3pm and 4pm

It is best to arrive after 3:29 to allow time for your child to arrive.

You must not stop at all in this area between 8am and 9am or between 3pm and 4pm

Don't stop. Drive around the block.



## If you arrive and there are no Five Minute parking spaces available

1. you must drive past.
2. you must not queue along Hayrick Lane due to the No Stopping signs which protect the school crossing and the roundabout.
3. you must not double park to collect or drop off your children.
4. you can go around the block to try again.
5. you can find another parking space and walk back.

## The most efficient use of the Five Minute parking spaces

Once you are in the 5 minute parking area, it will help if you keep moving to the front of the zone. The current parking restrictions do not stop you from leaving your vehicle but leaving your vehicle will reduce the efficiency of the Pick Up and Drop Off zone and increase the time it takes for other students to be collected or dropped off.

It is recommended that parents wanting to enter the school yard park a little further from the school gate and leave the five minute spaces available as a Pick Up and Drop Off zone.

## You Can Help in the Afternoons

When the school bell sounds at 3:30pm each day it takes the children about 4 minutes to collect their belongings and be ready at the school pick up zone. As the time restriction is for five minutes there is no point in arriving in these parking spaces prior to 3:30pm as you can and will be booked if you stay too long.

- Do not arrive early unless your children will be ready.
- Please stagger your arrival times.
- Do not arrive before 3:30pm unless you have arranged to collect students prior to 3:30pm.

If you do not arrive in time to get into one of the five minute parking spaces at 3:30pm, there is no point in returning before 3:34pm which is when the first spaces will start to become available.

## Reduce Parking Congestion - Bimbadeen Heights Promotes Active Travel

If you live within walking distance of the school your children can benefit from walking or cycling to school. (Children up to the age of 12 and parents accompanying these children are legally able to ride on the footpaths.) If you live further away then park away from the school and encourage your children to walk or walk with them.

There are good footpaths and supervised school crossings to help your child get safely to school in just a few minutes. Avoid parking fines, enjoy improved health and fitness, reduce congestion and help make our community safer. Please always ensure that your child walks with at least one other person.

## Road Rules that Limit Parking

### 1. Parking clear of driveways

The road rules require parked vehicles to leave adequate space for other vehicles to use driveways. On narrow roads you may need to park well clear of driveways to allow space for turning vehicles to access the properties.

### 2. Parking clear of footpaths

It is not allowable or safe to park a car or truck on or blocking a footpath. Footpaths cater for adult and child pedestrians, prams and wheelchairs.

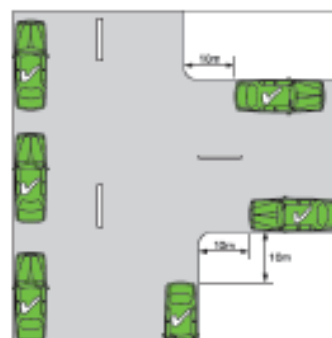
### 3. Parking 3 metres clear of:

**continuous centre lines, vehicles on the other side of the road, the far side of the road**

The road rules require you to leave three metres of roadway clear to allow through traffic and emergency vehicles to travel along the road. Trucks can measure 2.5 metres in width and with their side mirrors they may use the full three metres. Where a continuous centre line restricts vehicles to one lane you must allow three metres between your parked vehicle and the centre line.

### 4. Park 10 metres clear of Intersections

Measurement of distance—T-intersection without traffic lights



For further information please contact Yarra Ranges Council on 1300 368 333 or [www.yarraranges.vic.gov.au](http://www.yarraranges.vic.gov.au)

Council will continue to work with the school to seek solutions to improve access to the school.

The council parkland that backs onto the school oval would have similar problems to the current Pick Up and Drop Off zone. A Pick Up and Drop Off zone in Bimbadeen Drive would be too difficult to supervise.

It would require significant goodwill from parents and residents to allow drivers to queue in Parry Drive for the existing Pick Up and Drop Off zone. The cars would be queuing on a steep, uphill gradient which would be difficult to drive at low speeds.