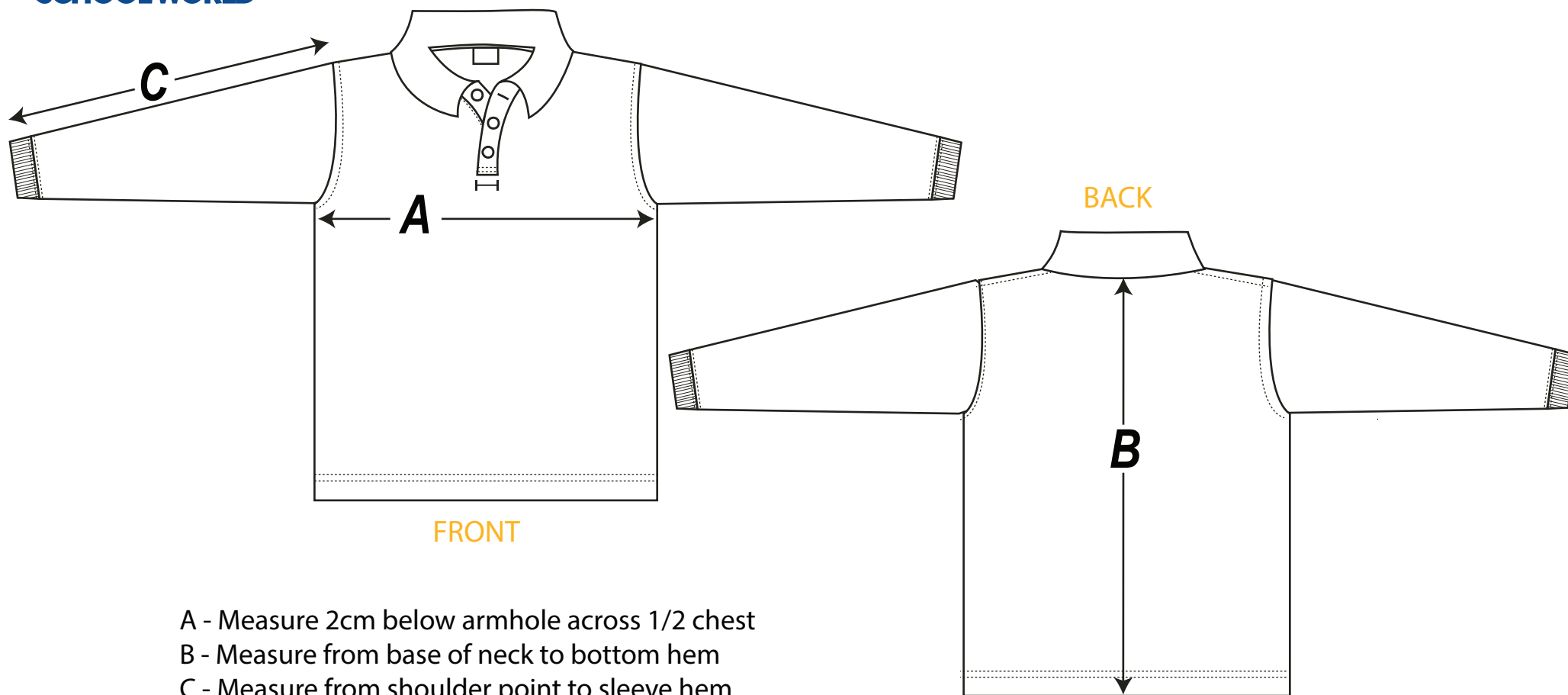


### How to measure guide



- A - Measure 2cm below armhole across 1/2 chest
- B - Measure from base of neck to bottom hem
- C - Measure from shoulder point to sleeve hem

#### POL02 Long Sleeve Polo Shirt

| SIZE                     | 2    | 4  | 6    | 8  | 10   | 12 | 14   | S  | M  | L  | XL   | 2XL | 3XL |
|--------------------------|------|----|------|----|------|----|------|----|----|----|------|-----|-----|
| A - Across Front cm      | 35.5 | 38 | 40.5 | 43 | 45.5 | 48 | 50.5 | 53 | 56 | 59 | 61.5 | 64  | 66  |
| B - Centreback Length cm | 43   | 47 | 51   | 55 | 59   | 63 | 67   | 70 | 72 | 74 | 75   | 76  | 77  |
| B - Sleeve Length cm     | 34   | 36 | 42   | 44 | 49   | 54 | 57   | 59 | 61 | 62 | 63   | 64  | 65  |

Listed are garment measurements, not body measurements.

When using the size chart, please measure an equivalent garment to determine the students